

# **Comtarsia LDAP Directory Replicator 2012**

## **Manual**

Version: 6.0.1.60, 13th May 2013

# Contents

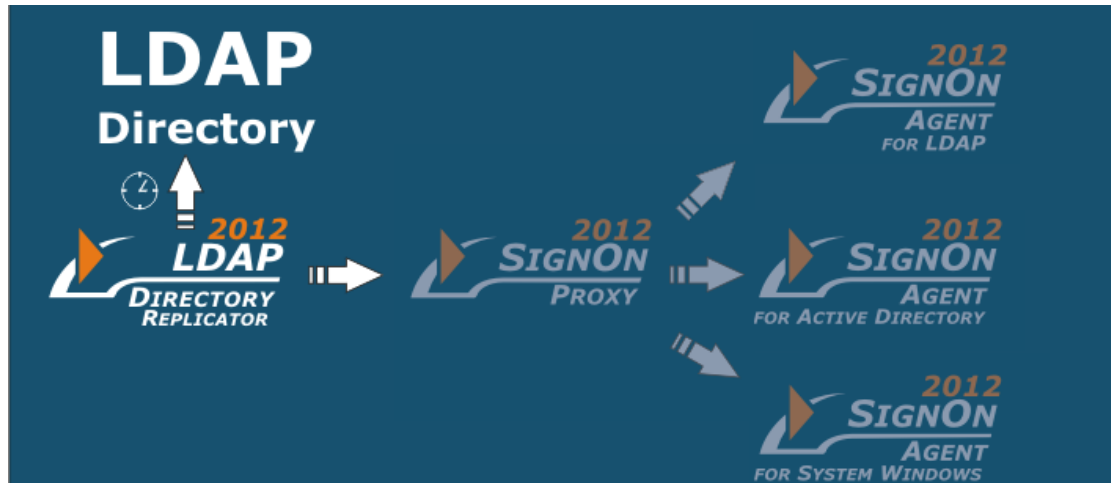
1.	Introduction.....	3
1.1	Installation LDR.....	4
1.2	Configuration .....	5
1.2.1	SignOn Proxy Server .....	5
1.2.2	LDAP Server .....	6
1.2.3	Scheduler .....	7
2.	Disclaimer .....	8



# 1. Introduction

Comtarsia LDAP Directory Replicator 2012 for Windows  
Build 6.0.1.60

Automatic time-scheduled unidirectional replication of user objects on target directories and target systems.  
Password-hashes can be replicated with the products Comtarsia Logon Client and Web Gateway.



Supported LDAP Server: IBM Tivoli Directory Server, Open LDAP, Open Directory (Mac OS X), Fedora Directory Server, Novell eDirectory Server, IBM z/OS SecureWay (RACF), Sun DS Enterprise Edition, Lotus Domino, Microsoft Active Directory (via LDAP).

The Comtarsia LDAP Directory Replicator 2012 consists of 3 components. A scheduler service, a replication component and a SOAP interface.

The scheduler service triggers the defined replication at the specified time.

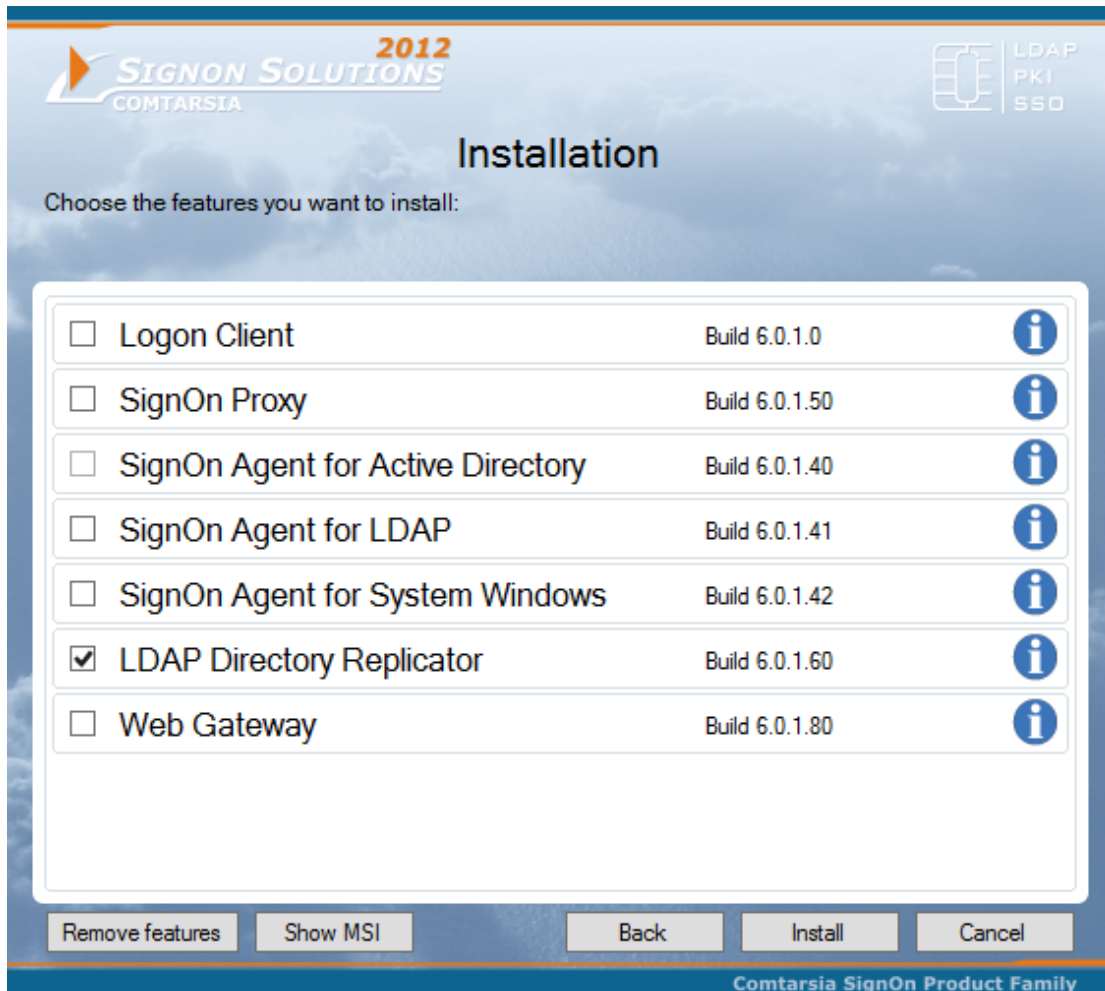
The SOAP interface can be used to trigger replication jobs manually via a customer-made SOAP client. It can also be used to query the status of manually triggered replication requests.

Supported Platforms: Windows Server 2008 / 2012

For more information about the Comtarsia SignOn Solutions see:  
<http://signon.comtarsia.com>

## 1.1 Installation LDR

An installation or an update is done using the SignOn Solutions 2012 bundle installer. When updating, the configuration is preserved.



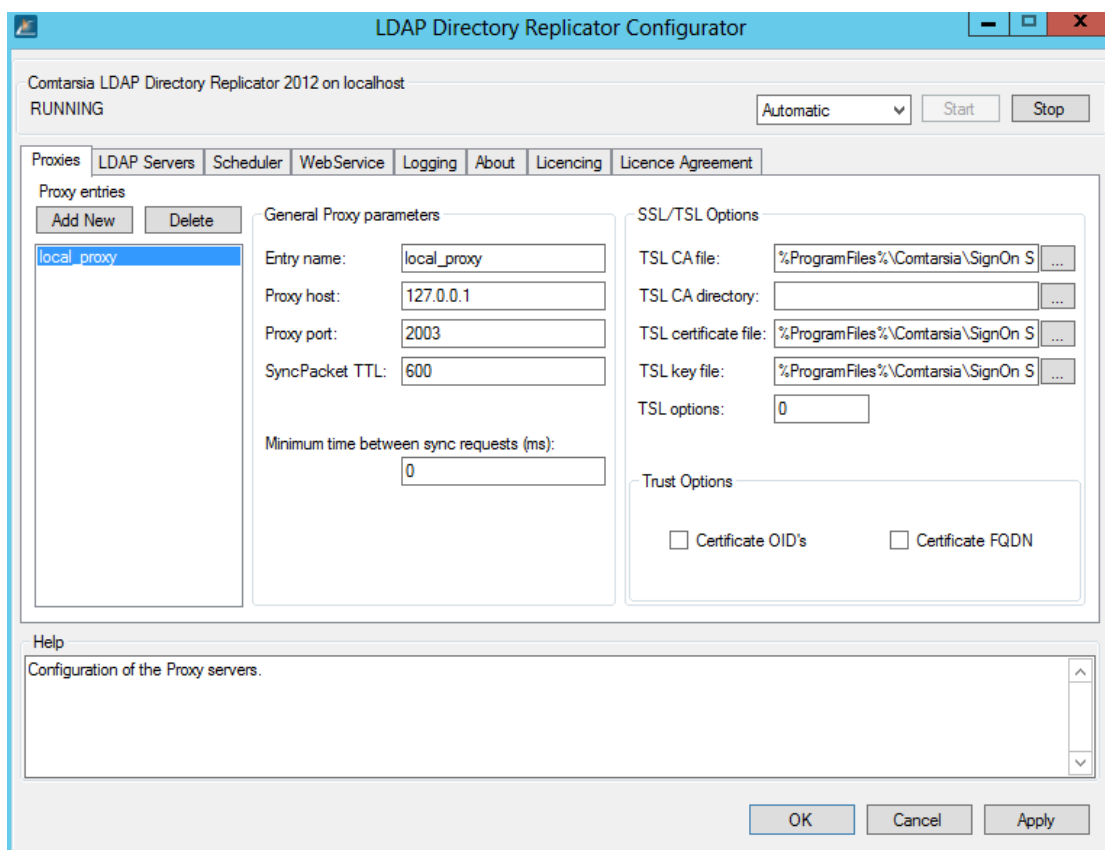
The installation program copies the necessary files and applies necessary registry changes. It also writes a default configuration into the registry (except for those values which have already been set – no existing config will be replaced).

## 1.2 Configuration

The configuration mainly consists of three parts.

- The configuration of the SignOn Proxy server which will handle the synchronisation and forward the user object to SignOn Agent services.
- One or more LDAP queries which specifies the LDAP server and how to find the LDAP users which have to be synchronised.
- One or more scheduler entries specifying when to replicate which LDAP query to which SignOn Proxy server.

### 1.2.1 SignOn Proxy Server

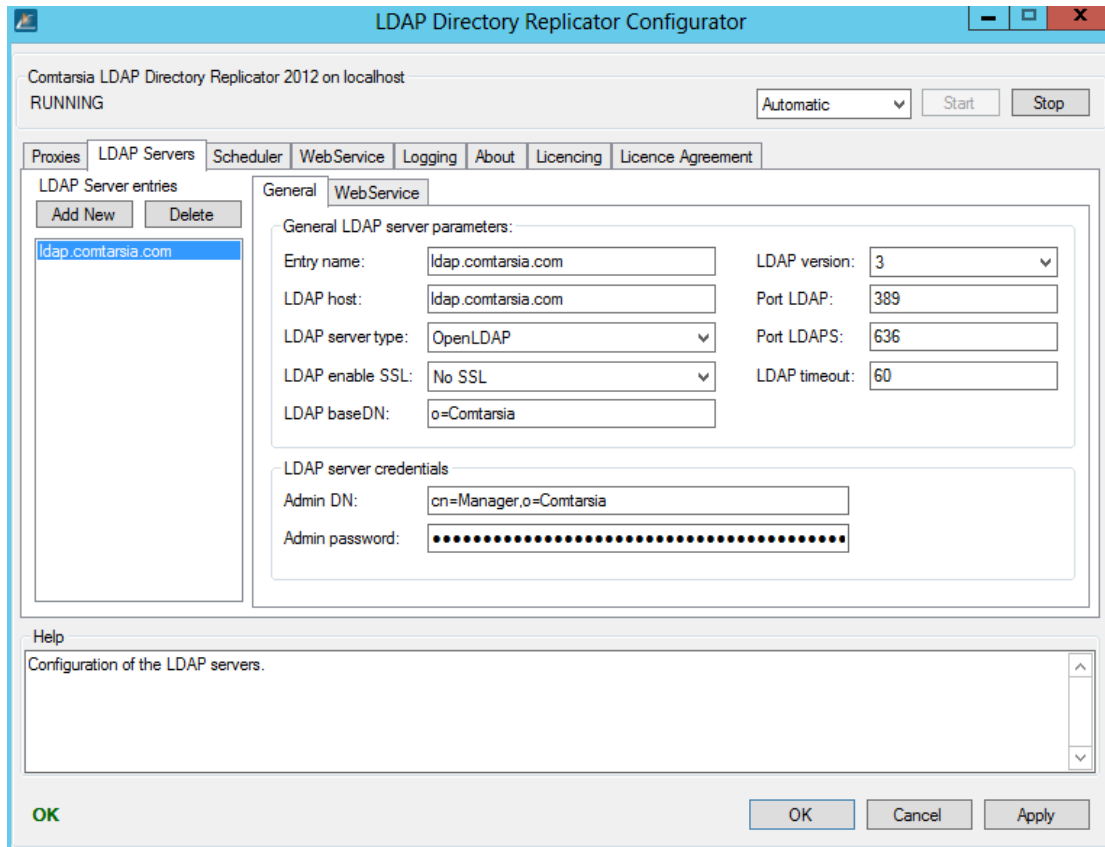


The value "proxy host" specifies an IP address or the host name of the SignOn proxy server.

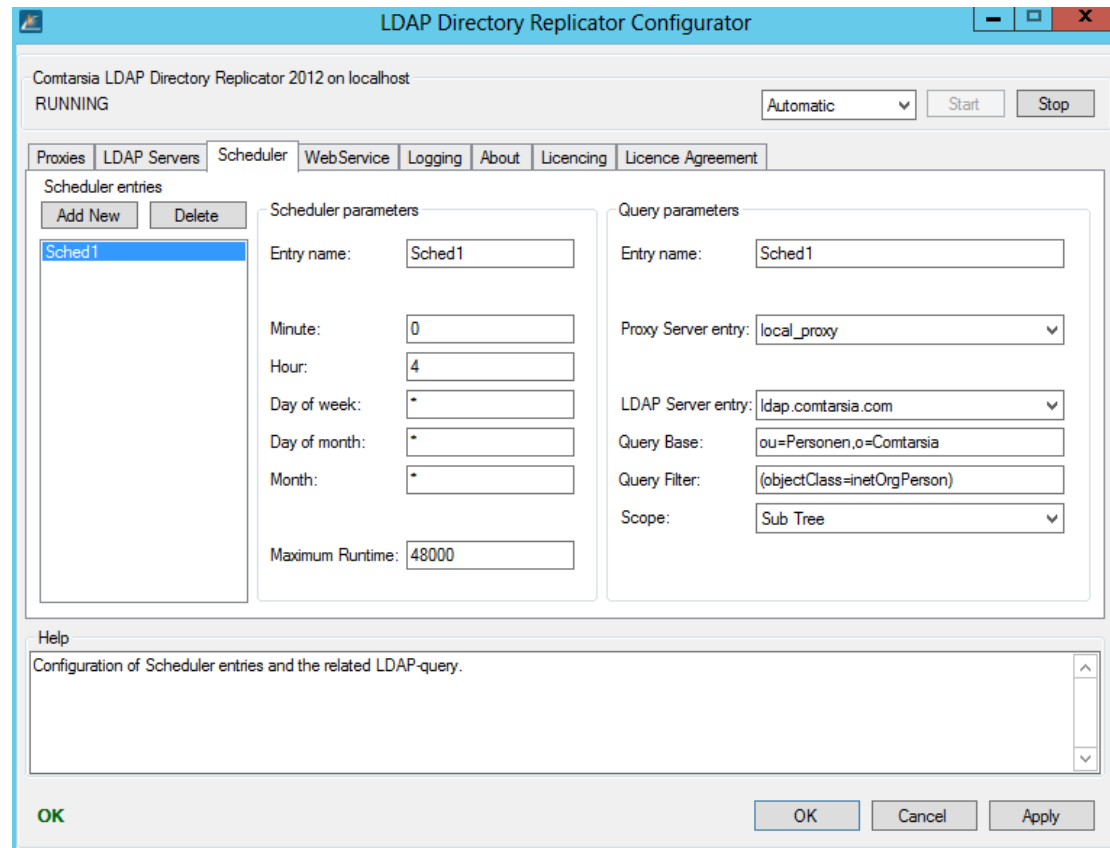
Which LDAP user attributes are read out by the LDAP is determined by the Proxy configuration (userDNPrefix and Variable Manager).

## 1.2.2 LDAP Server

If no LDAP server entry exists, a new entry has to be added.



### 1.2.3 Scheduler



With the Scheduler parameters the start time and the maximum runtime of the job can be configured. All date/time-fields also support wildcards:

- "\*" – always match
- "\*/NUM" – matches every NUM units, e.g. "\*/5" will match every 5 units
- "NUM1-NUM2" – will only match between NUM1 and NUM2

With query parameters a proxy and a LDAP server entry have to be selected which should be used for replication.

Query Base, Query Filter and Scope defines a LDAP query which should match all LDAP user entries which should be replicated by this job.

On the LDAP Directory Replicator is only configured which objects should be replicated, the LDAP attributes are determined automatically by the SignOn Proxy configuration.

## 2. Disclaimer

All pages are subject to copyright and may only be copied or integrated in own offers with the written permission of Comtarsia IT Services.

All Rights reserved.

Subject to changes without notice!

Comtarsia IT Services does not give any assurance or guarantee for other websites, to which we refer in this manual. If you access a non-Comtarsia IT Services Website, it is an independent site beyond our control. This is also valid, if this site contains the Comtarsia IT Services logo.

In addition, a link from our site to another does not mean that we identify ourselves with their content or support their use.

